

**Marté Szirmay**  
*Stormy Weather* (2006)

Bronze  
350 x 900 x 900mm



**Hannah Kidd**  
*Snakes and Ladders* (2014)

Aluminium ladders, steel and corrugated iron  
3 x 5.5 x 2.5 metres



**Mandy Cherry Joass**  
*You are here* (2015)

Steel, granite, harakeke  
2700 x 2700 x 2700mm



**Llew Summers**  
*Heaven Sent* (2015)

Bronze  
2200 x 1100 x 600mm



**Doug Neil**  
*Helaine and Hellene - Gateway* (2014)

Timaru bluestone  
Height 3 metres, 10 tonne. Height 2.7 metres, 8 tonne



**Doug Neil**  
*Enigma Variation* (2015)

Timaru bluestone  
1300 x 1200 x 600mm



**Doug Neil**  
*Stairway Home* (2015)

Timaru bluestone  
1100 x 550 x 420mm



**Doug Neil**  
*Canoe I* (2016)

Timaru bluestone  
350 x 750 x 200mm



**Doug Neil**  
*Canoe II* (2016)

Timaru bluestone  
250 x 600 x 200mm



**Doug Neil**  
*Cathedral* (2015)

Timaru bluestone  
1100 x 550 x 420 mm



**Doug Neil**  
*Hellenic Series III* (2014)

Timaru bluestone  
1200 x 300 x 400 mm



**Doug Neil**  
*Hellenic Series II* (2014)

Timaru bluestone  
1200 x 300 x 400 mm



**Hannah Kidd**  
*Oil Snake* (2014)

Found oil can, steel and corrugated iron  
460 x 620 x 290mm



**Bruce Young**  
*Reflections* (2015) Ed. 5/5

Stainless steel on steel plinth (included)  
1600 x 500 x 500mm



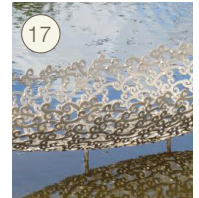
**Alison Erickson**  
*This Fine Balance: Hope, Despair, Loss* (2016)

Bronze  
720 x 400 x 320mm on steel base 1200 x 500 x 350mm



**Russell Beck**  
*Curvature of Time* (2016)

Galvanised, painted 3mm steel  
1350 x 470 x 300mm



**Rebecca Rose**  
*Feathered* (2014)

Aluminium  
450 x 2000 x 400mm



**Robyn Webster**  
*Turning Point* (2016)

Industrialised harakeke fibre, resin, monofilament, paint.  
Height 2.8m



**Llew Summers**  
*The Burden of Wings* (2008)

Marble  
1300 x 600 x 450mm



**Llew Summers**  
*It's A Topsy Turvy World* (2010)

Carrara marble  
880 x 270 x 270mm



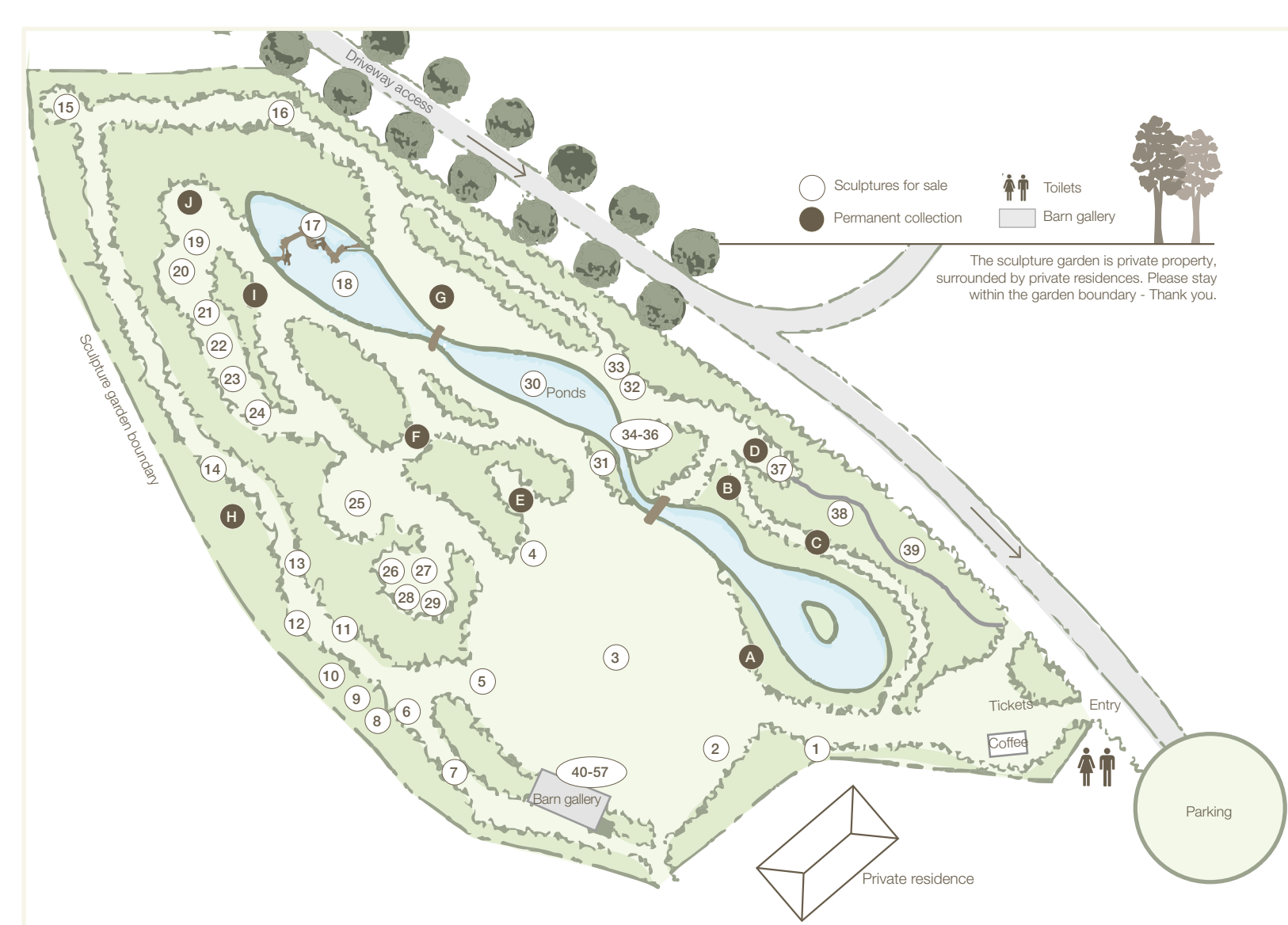
**Llew Summers**  
*Mercury* (2015) Ed. 1/7

Bronze  
350 x 350 x 300mm



**Llew Summers**  
*Lead On* (2014) Ed. 1/7

Bronze  
300 x 700 x 200mm



**Llew Summers**  
*Wing to Wing* (2015) Ed. 1/7

Bronze  
380 x 150 x 100mm



**Llew Summers**  
*Fun and Games* (2015) Ed. 1/7

Bronze  
350 x 400 x 250mm



**Ben Foster**  
*Shadow* (2016) Ed. 2/3

Aluminium and waterborne automotive paint  
850 x 2300 x 750mm



**Graham Bennett**  
*Waterways* (2015)

Stainless steel, steel, ceramic (component by Cheryl Lucas), aluminium laminate, polyester resin  
1800 x 400 x 400mm



**Graham Bennett**  
*To and Fro* (2015)

Stainless steel, powder-coated steel  
3m x 1400 x 900mm



**Graham Bennett**  
*Loss Adjuster II* (2015)

Corten steel, brass, stainless steel,  
1750 x 360 x 200mm



**Graham Bennett**  
*TRIG - Now Near, How Far* (2008)

Stainless steel, powder-coated steel, basalt, glass, granodiorite stones  
3.5 x 3 x 3 metres



**Robyn Webster**  
*Something and Nothing* (2016)

Industrialised Harakeke fibre, resin, monofilament, paint  
Height 1.2m



**Bing Dawe**  
*Tuna-Lake Waiwera* (2005)

Ed. 2/4  
Bronze and steel  
2300 x 500 x 500mm



**Donna Marie Patterson**  
*Layers I* (2016)

Greywacke and white quartz, stainless steel, concrete  
2700 x 600 x 200mm



**Donna Marie Patterson**  
*Layers II* (2016)

Greywacke and white quartz, stainless steel, concrete  
2700 x 600 x 200mm



**Rebecca Rose**  
*Bush lines II* (2014)

Corten steel  
2000 x 400 x 400mm



**Rebecca Rose**  
*Bush lines III* (2014)

Corten steel  
2000 x 400 x 400mm



**Rebecca Rose**  
*Bush lines I* (2014)

Corten steel  
2000 x 400 x 400mm



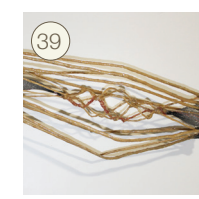
**Terry Stringer**  
*We Are Shaped By Our Childhoods* (2015)

Ed. 2/2  
Bronze  
1608 x 700 x 700mm



**Robyn Webster**  
*Transition* (2015)

Harakeke fibre, glass fibre, resin  
330 x 770 x 330mm



**Robyn Webster**  
*Thinking About It I* (2015)

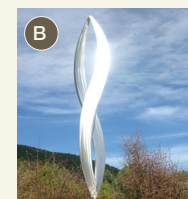
Harakeke fibre, glass fibre, resin  
330 x 770 x 330mm

### Permanent collection



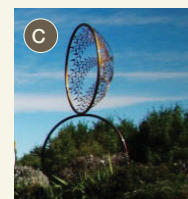
**Doug Neil**  
*Canoe* (2007)

Timaru Bluestone



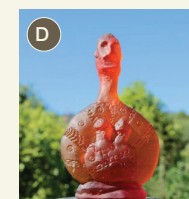
**Ben Foster**  
*Infinity* (2014)

Ed. 1/3  
Aluminium, stainless steel, exterior sealant, sealed bearing



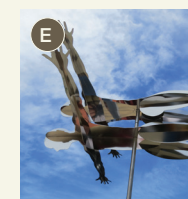
**Neil Dawson**  
*Vortex* (2016)

Steel, paint



**Annabel Menzies-Joyce and friends**  
*The Fertility Goddess Grove* (2013)

Cast glass



**Graham Bennett**  
*None So Blind* (2015)

Stainless steel, galvanised steel, telecommunication pole (recycled from Antarctica)



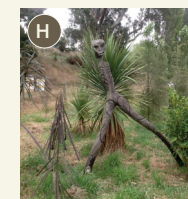
**Bing Dawe**  
*A Landscape with Too Many Holes, Waiting for St Francis - A Gateway* (2015)

Bronze and steel



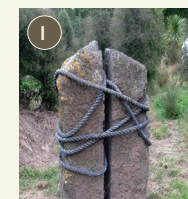
**Doug Neil**  
*The Rocks* (2013)

Timaru Bluestone



**Danny Summers**  
*Peter* (2012)

Totara



**Doug Neil & Annabel Menzies-Joyce**  
*Bound* (2012)

Timaru Bluestone and rope

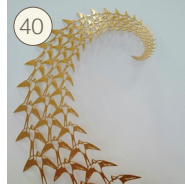


**Llew Summers**  
*Follow Me* (1995)

Concrete



## Barn gallery



**Neil Dawson**  
*Swallows (gold)*  
(2016) Ed. 1/6

Steel  
800 x 520 x 120mm



**Neil Dawson**  
*Swallows (blue)*  
(2016) Ed. 1/6

Steel  
800 x 520 x 120mm



**Greer Twiss**  
*Winged Victory*  
(2012)

Bronze and g-clamp  
640 x 1170 x  
150mm



**Bing Dawe**  
*From the constellation Pisces - Our Fish - Galaxiidae - Down Under a Night Sky*  
(2016) Six works  
Ed. 1/2

Bronze and steel  
600 x 600mm



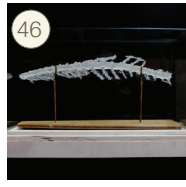
**Bing Dawe**  
*Under a night sky - Small fry gather at the mouth - Galaxiidae* (2016)  
Ed. 1/2

Bronze and steel  
900mm diameter



**Bing Dawe**  
*Under a Night Sky - Joining the dots - making our pictures - Pisces to Kokopu, Giant, Banded - down under*  
(2016) Ed. 1/2

Bronze and steel  
900mm diameter



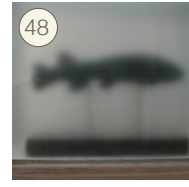
**Annabel Menzies-Joyce**  
*Spine. Barracuda. Thyrsites atun*  
(2016) Ed. 1/3

Pate de verre glass in glass vitrine  
250 x 370 x 170mm



**Annabel Menzies-Joyce**  
*Mullet. Mugil cephalus* (2016)  
Ed. 1/3

Cast glass in glass vitrine  
300 x 320 x 145mm



**Annabel Menzies-Joyce**  
*Giant kokopu. Galaxias argenteus* (2016)  
Ed. 1/3

Porcelain in frosted glass vitrine  
250 x 290 x 108mm



**Annabel Menzies-Joyce**  
*Tarakahi. Nemadactylus macropterus*  
(2016)  
Ed. 1/3

Porcelain in frosted glass vitrine  
250 x 290 x 108mm



**Annabel Menzies-Joyce**  
*Perch. Helicolenus barathri* (2016)  
Ed. 1/3

Cast glass in glass vitrine  
300 x 370 x 145mm



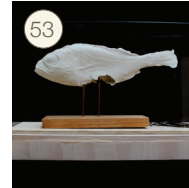
**Annabel Menzies-Joyce**  
*Mullet. Mugil cephalus* (2016)  
Ed. 1/3

Porcelain in glass vitrine  
300 x 365 x 165mm



**Annabel Menzies-Joyce**  
*Perch. Helicolenus barathri* (2016)  
Ed. 1/3

Porcelain in glass vitrine  
250 x 420 x 170mm



**Annabel Menzies-Joyce**  
*Perch. Helicolenus barathri* (2016)  
Ed. 1/3

Pate de verre glass & fish hooks in glass vitrine  
298 x 315 x 135mm



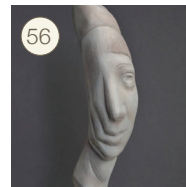
**Annabel Menzies-Joyce**  
*Barracuda. Thyrsites atun*  
(2016) Ed. 1/3

Pate de verre glass in glass vitrine  
250x295x175mm



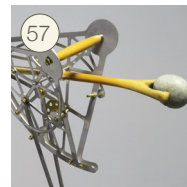
**Tim Main**  
*Composition with Puriri* (2016)

Recycled oak, ceramic, oils  
685 x 1620 x 100mm



**Terry Stringer**  
*Model with the Sculptor's Hands*  
(2016) Ed. 1/5 + AP

Bronze  
320 x 120 x 120mm



**Graham Bennett**  
*To Where?*  
(2016)

Stainless steel, wood, stone, brass  
510 x 280 x 250mm



### Our mission

Tai Tapu Sculpture Garden's mission is to support contemporary New Zealand sculpture practice and to enhance native biodiversity in Canterbury.

TSG is an evolving sculpture garden comprising one hectare of recently-established native New Zealand bush. New planting includes tōtara, mataī, kahikatea, beech, rimu and other rare or threatened native plants of Canterbury.

### Purchasing artworks

This exhibition features permanent works and others for sale. All works for sale are indicated in the catalogue. View larger images online.

Payments can be made directly into Tai Tapu Sculpture Garden's account: 03 0823 0122455 94. Documentation will be provided.

Artworks purchased can be collected at the end of the exhibition period (20 March 2016). Insurance and transportation must be organised by the purchaser. We are happy to provide advice on transportation and installation. And we can liaise with the artist(s) on the purchaser's behalf to facilitate installation. Cost of installation varies between artworks and sites.

### Commissions

Missed out on something you like? Enquire about other available works, editions and commissions.

### Garden details

Entry is \$10 pp and free to 16 years and under. All are welcome and onsite parking is free. The Garden is pram and wheelchair friendly. All tracks are grassed and the terrain is mostly flat. Picnickers are welcome during open hours.

Saturdays and Sundays 11am - 3pm

5 & 6 March, 12 & 13 March, 19 & 20 March 2016

Thank you for visiting the Tai Tapu Sculpture Garden and being part of this project. Your support is appreciated.

### Contact

If you have any queries, please speak to Melissa Reimer 021 242 2462 or Peter Joyce 027 325 2000 or email: [taitapusculpturegarden@gmail.com](mailto:taitapusculpturegarden@gmail.com)

Find more information online: [www.taitapusculpturegarden.co.nz](http://www.taitapusculpturegarden.co.nz)



**TSG**  
TAI TAPU SCULPTURE GARDEN  
199 Cossars Road, Tai Tapu, New Zealand