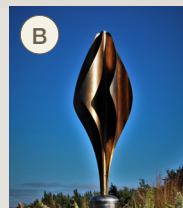




Permanent collection



Marté Szirmay
Stormy Weather
(2006)
Bronze.



Andrew Drummond
Ngaio
(2017)
Patinated steel, bearing.



Doug Neil
Canoe
(2007)
Timaru bluestone.



Neil Dawson
Vortex
(2016)
Painted steel.



Bing Dawe
A Landscape with Too Many Holes, Waiting for St Francis - A Gateway
(2015)
Bronze & steel.



Johnny Turner
Sky Mirror
(2017)
Granite, corten & stainless steel.



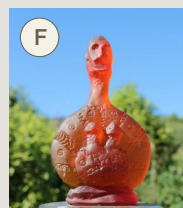
Doug Neil
The Rocks
(2010)
Timaru bluestone.



Annabel Menzies-Joyce & Doug Neil
Bound
(2012)
Timaru bluestone & rope.



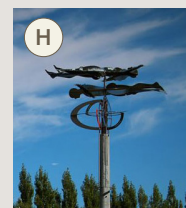
Ben Foster
Infinity
(2014)
Aluminum, stainless steel, exterior sealant, sealed bearing.



Annabel Menzies-Joyce & friends
The Fertility Goddess Grove
(2013)
Cast glass.



Llew Summers
Haven of Souls
(2017)
Granite on bronze & concrete plinth.



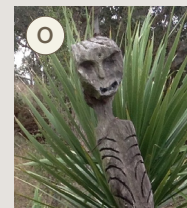
Graham Bennett
None So Blind
(2015)
Stainless steel, galvanised steel, telecommunication pole (recycled from Antarctica).



Llew Summers
Follow Me
(1995)
Concrete.



Alison Erickson
Bureaucracy and the huiā
(2017)
Bronze.



Danny Summers
Peter
(2012)
Totara.



Our mission

Tai Tapu Sculpture Garden's mission is to support contemporary New Zealand sculpture practice and enhance native biodiversity in Canterbury.

TSG is an evolving sculpture garden comprising one hectare of recently-established native New Zealand bush. New planting includes totara, matai, kahikatea, beech, rimu and other rare or threatened native plants of Canterbury.

Purchasing artworks

This exhibition features permanent works and others for sale. All works for sale are indicated in the catalogue. Larger images can be provided upon request.

Payments can be made directly into Tai Tapu Sculpture Garden's account: **03 0823 0122455 94**. Documentation will be provided.

Artworks purchased can be collected at the end of the exhibition period, 18 March 2018 from 3pm or by arrangement. Insurance and transportation must be organised by the purchaser. We are happy to provide advice on transportation and installation. And we can liaise with the artist(s) on the purchaser's behalf to facilitate installation. Cost of installation varies between artworks and sites.

Commissions

Missed out on something you like? Enquire about other available works, editions and commissions.

Garden details

Entry is \$10 pp and free to 16 years and under. All are welcome and onsite parking is free. The Garden is pram and wheelchair friendly. All tracks are grassed and the terrain is mostly flat. Picnickers are welcome during open hours.

We are open **Saturdays and Sundays 11am-3pm** on 3/4, 10/11 and 17/18 March 2018.

Contact

If you have any queries, please speak to Melissa Reimer **021 242 2462** or Peter Joyce **027 325 2000**, or email: taitapusculpturegarden@gmail.com

Thank you for visiting the Tai Tapu Sculpture Garden and being part of this project. Your support is appreciated.

Find more information online: www.taitapusculpturegarden.co.nz

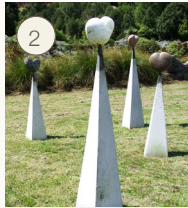


2018

199 Cossars Road, Tai Tapu, New Zealand



1
Doug Neil
Polytropos
(2018)
Timaru bluestone.
Height 2, 2.5 &
2.8m, 400mm
diameter
\$42,000



2
Llew Summers
Haven of Souls
(2017)
Stone, bronze &
concrete.
Height 2m (approx)
\$4,800



3
Oliver Stretton
Pow Infrastructure 5: Ship of Fools
(2016)
Redwood, marine
ply & bronze.
1200x2500x600mm
x 2
\$15,000



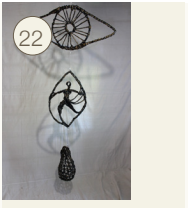
4
Llew Summers
Mercury
(2017)
Bronze.
1800x1300
x1800mm
\$90,000



5
Llew Summers
Heaven Sent
(2015)
Bronze.
2200x1100x600mm
\$90,000



21
Donna Marie
Patterson Botanical Paradise
(2018)
Enamel, steel &
resin.
1500x800x800mm
\$3,950



22
Robyn Webster
Seeing Knowing Remembering
(2018)
Industrialised
harakeke (flax),
resin & paint.
1800x800x300mm
\$3,000



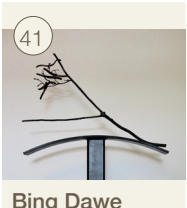
23
Robyn Webster
Our Place
(2018)
Industrialised
harakeke (flax),
resin & paint.
2000x400x10mm
\$2,400



24
Robyn Webster
Three Sisters
(2018)
Industrialised
harakeke (flax),
resin & paint.
350x900x900mm
\$2,400



25
Robyn Webster
Held In Common I
(2018)
Industrialised
harakeke (flax),
resin & paint.
1000x1000x600mm
\$1,750



41
Bing Dawe
Between the eeler's trick and the diviner's promise - Tunariki I (2018)
Cast bronze,
fabricated &
painted steel.
1900x600x300mm
\$6,000



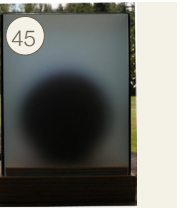
42
Bing Dawe
Between the eeler's trick and the diviner's promise - Tunariki I (2018)
Cast bronze,
fabricated &
painted steel.
1900x600x300mm
\$6,000



43
Johnny Turner
Helm for the norwester
(2018)
USA granite.
2000x470x150mm
\$15,000



44
Annabel
Menzies-Joyce Enigma I
(2018)
Painted ceramic
in glass vitrine on
plywood.
255x199x199mm
\$1,050



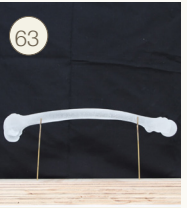
45
Annabel
Menzies-Joyce Enigma II
(2018)
Painted ceramic
in glass vitrine on
plywood.
255x199x199mm
\$1,050



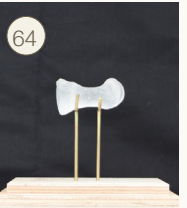
61
Annabel
Menzies-Joyce Bovine vertebra I
(2018) Ed. 1 of 3
Cast glass in glass
vitrine on plywood.
235x290x156mm
\$1,200



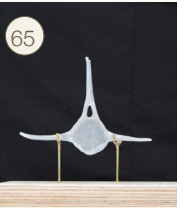
62
Annabel
Menzies-Joyce Bovine vertebra II
(2018) Ed. 1 of 3
Cast glass in glass
vitrine on plywood.
235x225x165mm
\$1,200



63
Annabel
Menzies-Joyce Femur
(2018) Ed. 1 of 3
Cast glass in glass
vitrine on plywood.
285x470x180mm
\$1,200



64
Annabel
Menzies-Joyce Moa toe bone
(2018) Ed. 1 of 3
Cast glass in glass
vitrine on plywood.
190x165x170mm
\$1,200



65
Annabel
Menzies-Joyce Vertebra of a dolphin
(2018) Ed. 1 of 3
Cast glass in glass
vitrine on plywood.
235x270x170mm
\$1,200



6
Cheryl Lucas
Green Flues
(2017)
Ceramic, painted.
830x330mm
\$6,500 pair



7
Doug Neil
Helaine & Hellene
(2014)
Timaru bluestone.
Height 3m,
10 tonne &
2.7m, 8 tonne
\$40,000 pair



8
Doug Neil
Heliotrope
(2018)
Timaru bluestone.
450mm diameter,
150mm deep
\$2,250



9
Doug Neil
Helio
(2018)
Timaru bluestone.
450mm diameter,
150mm deep
\$2,250



10
Doug Neil
River Run
(2018)
Timaru bluestone.
350x900x900mm
\$2,350



26
Robyn Webster
Held In Common II
(2018)
Industrialised
harakeke (flax),
resin & paint.
1000x600x400mm
\$1,600



27
Mandy Cherry
Joass Teo Ao (small cloud)
(2018)
Aluminium venetian
blind slats, rivets
& paint.
400x490x200mm
\$750



28
Mandy Cherry
Joass Infinite unfolding
(2018)
Aluminium venetian
blind slats & rivets.
350x350x350mm
\$550



29
Mandy Cherry
Joass Poi Rere (Poi Flight)
(2018)
Aluminium venetian
blind slats & rivets.
900x1000x800mm
\$1,790



30
Llew Summers
The Spirit of the Journey
(2018)
Granite, bronze
& concrete.
Height 2m (approx)
\$4,000-\$6,000
each



46
Annabel
Menzies-Joyce Enigma III
(2018)
Painted ceramic
in glass vitrine on
plywood.
255x199x199mm
\$1,050



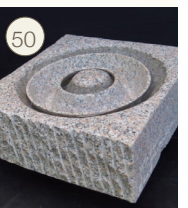
47
Neil Dawson
Phoenix
(2014-18)
Zinc plated steel,
automotive paint,
stainless steel
swivel mount &
granite.
2050x320x320mm.
Base 600mm
diameter
\$30,000



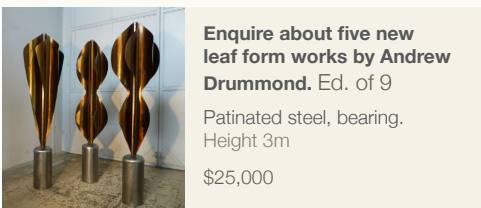
48
Virginia King
Aramarama - Silver Moon
(2017) Ed. 2/5
316, 2mm marine
grade steel.
800mm diameter,
150mm deep
\$20,000



49
Olivia Webb
Nisi Dominus
(2018)
2 speakers &
cables, 1 solar
panel & media unit.
\$16,000



50
Wataru
Hamasaka (Japan) Ring in Ring
Stone and granite.
210x410x410mm
\$6,500



Enquire about five new leaf form works by Andrew Drummond. Ed. of 9
Patinated steel, bearing.
Height 3m
\$25,000



11
Doug Neil
Nor'wester Canoe
(2018)
Timaru bluestone.
1250x400x50mm
\$2,500



12
Tony O'Grady
Tui Dance [polished gold]
(2018) Ed. 1 of 7
Bronze.
190x220mm
\$3,400



13
Tony O'Grady
Tui Dance [speckled]
(2018) Ed. 1 of 7
Bronze.
190x220mm
\$3,400



14
Tony O'Grady
Tui Dance [dark]
(2018) Ed. 1 of 7
Bronze.
190x220mm
\$3,400



15
Tony O'Grady
The First Man
(2018) Ed. 2 of 7
Bronze.
Height 460mm
\$3,900



31
Ana Korver
Impossible staircase
(2016)
Taranaki andesite &
corten steel.
Height 2.4m, 80kg
\$12,400



32
Ana Korver
Collapse of known reality
(2016)
Italian black marble.
3 pieces, 300x300
x300mm, 15kg;
200x250x400mm,
15kg; 600x300
x500mm, 80kg
\$10,000



33
Johnny Turner
Celestial Helm
(2017)
Kairuru, Takaka,
New Zealand marble
on granite base.
1600x350x350mm
+ base
200x300x300mm
\$9,000



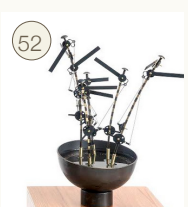
34
Marté Szirmay
Double Crossed
(2002)
Zinc plated mild
steel, powder
coated.
500x500x500mm
\$3,450



35
Marté Szirmay
Universality
(2004)
Sand cast iron
(6 parts).
470x460x460mm
\$12,000



51
Graham
Bennett On Being Misdirected
(2017)
Steel, brass,
recycled wood,
water.
450x150x150mm
\$4,700



52
Graham
Bennett Heed
(2017)
Steel, brass,
recycled wood,
water.
450x150x150mm
\$4,700



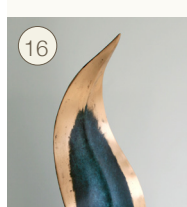
53
Graham
Bennett Polluted Inheritance, Te Waihora
(2017)
Digital print on steel,
with lake water.
370x300x300mm
\$5,800



54
Tim Main
Beech with Moth II (2018)
Wood, stone clay
and bronze.
1350x610x600mm
\$3,750



55
Tim Main
Beech with Moth I
(2018)
Wood, stone clay
and bronze.
1600x960x600mm
\$6,250



16
Matt Williams
Fluid State
(2018) Ed. 1 of 5
Bronze on concrete
plinth.
1800x250mm
\$5,700



17
Matt Williams
Entwined
(2017)
Black granite on
bluestone base.
1400x400mm
\$6,500



18
Alison Erickson
Learning to walk on uneven ground
(2018)
Bronze.
1100x400mm,
plinth 1m
\$13,500



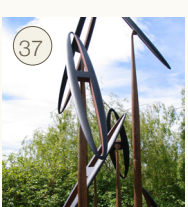
19
Johnny Turner
Anchor Stone
(2018)
USA granite.
1320x40cmx160mm
\$12,500



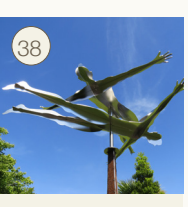
20
Johnny Turner
A New Moon
(2018)
Kairuru, Takaka,
New Zealand
marble on corten
steel base.
1000x500x120mm
\$7,500



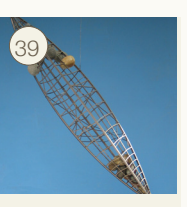
36
Rory
McDougall Corm 6
(2018)
Mt Somers stone.
600x150x100mm
\$4,000



37
Graham
Bennett Nine Times
(2004)
Powder coated
aluminium & steel.
2800x800x800mm
\$17,500



38
Graham
Bennett Look up, Look down, Look out
(2017)
Steel.
2400x1000
x1000mm
\$15,000



39
Graham
Bennett Guidelines
(2006)
Stainless steel
& granodiorite
boulders.
3200x2100
x1800mm
\$21,000



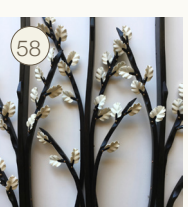
40
Graham
Bennett Waterways
(2015)
Stainless steel,
steel, ceramic
(by Cheryl Lucas),
aluminium laminate,
polyester resin.
1800x400x400mm
\$6,000



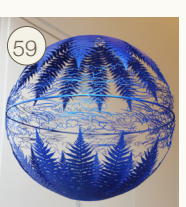
56
Tim Main
Beech with Moth III
(2018)
Wood, stone clay
and bronze.
1020x280x60mm
\$1,250



57
Tim Main
Beech with Moth IV
(2018)
Wood, stone clay
and bronze.
1020x280x60mm
\$1,250



58
Tim Main
Beech with Moth V
(2018)
Wood, stone clay
and bronze.
1020x280x60mm
\$1,250



59
Neil Dawson
Canopy
(2017) Ed. of 6
Painted stainless
steel.
500mm diameter
\$9,000



60
Neil Dawson
Murmur Dome
(2017) Ed. of 5 &
6 of 6
Painted stainless
steel.
600mm diameter
\$5,000

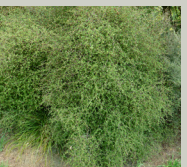
Flora



Kahikatea
Dacrydium dacrydioides
Also known as white pine. Grow to 60 metres. Dominant in swampy areas. Tuis love the red edible fruit. Charcoal from the heart wood used for tattooing moko. Used by early European for ship masts and butter boxes. Dominant tree in Riccarton bush. Previously common near Tai Tapu.



Heart-leaved kohuhu
Pittosporum obcordatum
Also known as black pine. Dominant tree in TSG valley a thousand years ago. Natural habitat in lowland forest, especially in good soils which are waterlogged in winter and dry in summer.



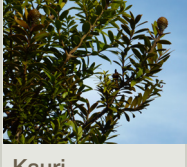
Shrubby Tororaro
Muehlenbeckia astonii
Rare brownish shrub with tangled zig-zagging branches bearing small heart-shaped leaves and white fruit with a black seed on top. Twigs orange. Leaves 2-15mm wide, with large dent at tip, on a 3-10mm long often brown grooved stalk, in clusters. Flowers small.



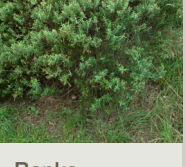
Totara
Podocarpus Totara
Grows to about 35 m. Highly prized by Maori. Noted for its longevity and great girth of trunk. Bark peels off in papery flakes, with a purplish to golden brown hue. Sharp, dull green needle-like leaves are stiff and leathery. Produces highly modified cones with 2 to 4 fused, fleshy berry-like juicy scales, bright red when mature. With Matai and Kahikatea, was dominant in TSG valley a thousand years ago.



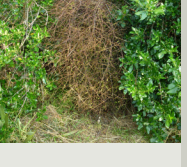
The Fierce Pseudopanax
Pseudopanax ferox
Small and uncommon tree endemic to Canterbury and Marlborough. Prominently tooth-shaped leaves. Juvenile leaves dark grey-brown to grey-green, narrow, stiff and up to 40cm long. Tree matures at 10-15 years, both leaves and tree's shape change dramatically. Can reach 6m.



Kauri
Agathis australis
Kauri are among the world's mightiest trees, growing to over 50m tall, with trunk girths up to 16m, and living for over 2,000 years. Prior to last ice age, lived in the South Island.



Banks Peninsula Hebe
Hebe strictissima
Rounded fast-growing shrub native to Banks Peninsula. Prolific white flowers sometimes tinted lavender. Fine lance shaped leaves. Evergreen. Relatively hardy.



Matai
Prumnopitys taxifolia
Also known as black pine. Dominant tree in TSG valley a thousand years ago. Natural habitat in lowland forest, especially in good soils which are waterlogged in winter and dry in summer.