

Permanent Collection



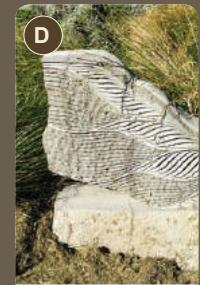
Graham Bennett
Locate
(2009)
Stainless steel.



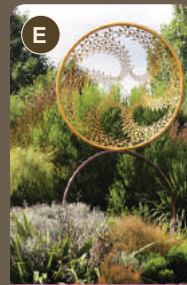
Marté Szirmay
Stormy Weather
(2006)
Bronze.



Andrew Drummond
Ngaio
(2017)
Patinated steel, bearing.



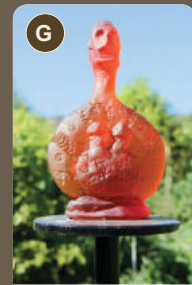
Doug Neil
Canoe
(2016)
Timaru bluestone.



Neil Dawson
Vortex
(2016)
Painted steel.



Ben Foster
Infinity
(2014)
Aluminium, stainless steel, exterior sealant, sealed bearing.



Annabel Menzies-Joyce & friends
The Fertility Goddess Grove
(2013)
Cast glass.



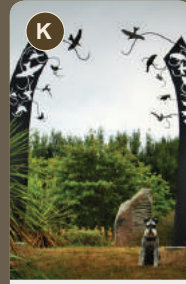
Llew Summers
from Haven of Souls series
(2017)
Granite on bronze & concrete plinth.



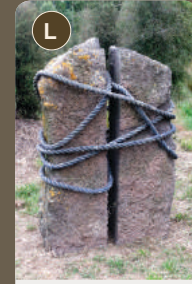
Doug Neil
The Rocks
(2010)
Timaru bluestone.



Graham Bennett
None So Blind
(2015)
Stainless steel, galvanised steel, telecommunication pole (recycled from Antarctica).



Bing Dawe
A Landscape With Too Many Holes, Waiting For St Francis - A Gateway
(2015)
Bronze and steel.



Annabel Menzies-Joyce
Bound
(2012)
Timaru bluestone and rope.



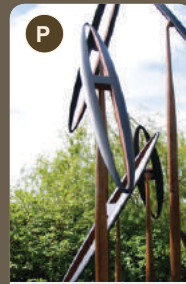
Johnny Turner
Sky Mirror
(2017)
Granite, corten & stainless steel.



Mandy Cherry Joass
Teo Ao (small cloud)
(2018)
Aluminium venetian blind slats, rivets & paint.



Llew Summers
Follow Me
(1995)
Concrete.



Graham Bennett
Nine Times
(2004)
Powdercoated aluminium.



Alison Erickson
Bureaucracy and the hui
(2017)
Bronze.



Danny Summers
Peter
(2012)
Totara.



○ Sculptures for sale
● Permanent collection

The sculpture garden is private property, surrounded by private residences. Thank you for staying within the garden boundary.

Our mission

Tai Tapu Sculpture Garden's mission is to support contemporary New Zealand sculpture practice and enhance native biodiversity in Canterbury.

TSG is an evolving sculpture garden comprising one hectare of recently established native New Zealand bush. New planting includes totara, matai, kahikatea, beech and rimu and other rare or threatened native plants of Canterbury.

Purchasing artworks

Tai Tapu Sculpture Garden has permanent works and others for sale. All works for sale are indicated in this catalogue. Larger images can be provided upon request.

Payments can be made directly into Tai Tapu Sculpture Garden's account: **03 0823 0122455 94**. Documentation will be provided.

Artworks purchased can be collected at the end of the exhibition period or by arrangement. Insurance, transportation and installation must be organised by the purchaser. We are happy to provide advice. Cost of installation varies between artworks and sites.

Commissions

Missed out on something you like? Enquire about other available works in the series, or editions (where applicable), or commissions.

Garden details

Entry is \$10 pp and free to 16 years and under. All are welcome and onsite parking is free. The Garden is pram and wheelchair friendly. All tracks are grassed and the terrain is mostly flat. Picnickers are welcome during the exhibition's open hours. The property is home to two dogs and chickens. If you're bringing your dog, please make sure they're on a lead and well behaved.

We are open the first three weekends in March: Saturdays and Sundays 11am-3pm, or by appointment.

Contact

If you have any queries, please speak to **Melissa Reimer 021 242 2462** or **Annabel Menzies-Joyce 027 325 2000** or **03 329 6662**, or email: taitapusculpturegarden@gmail.com

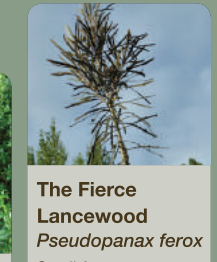
Thank you for visiting Tai Tapu Sculpture Garden and being part of this project. Your support is appreciated.

Find more information online: taitapusculpturegarden.co.nz

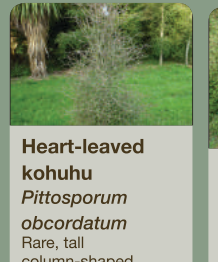
Flora



Matai
Prumnopitys taxifolia
Black pine. Dominant tree in TSG valley a thousand years ago. Natural habitat in low-land forest, especially in good soils that are waterlogged in winter & dry in summer.



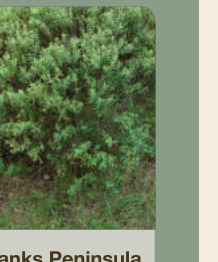
The Fierce Lancewood
Pseudopanax ferox
Small & uncommon tree endemic to Canterbury & Marlborough. Tooth-shaped leaves. Juvenile leaves dark grey-brown to grey-green, narrow, stiff & up to 40cm long. Tree matures at 10-15 years then changes appearance. Can reach 6m.



Heart-leaved kohuhu
Pittosporum obcordatum
Rare, tall column-shaped shrub with interlaced wide-angled twigs bearing many scattered small rounded leaves, tiny yellowish flowers & small woody capsules. First discovered near Akaroa in 1840s. "Lost" for 170 years. Rediscovered on Banks Peninsula in 2012.



Shrubby Tororaro
Muehlenbeckia astonii
Rare brownish shrub with tangled zig-zagging branches bearing small heart-shaped leaves & white fruit with a black seed on top. Twigs orange. Tiny flowers in clusters of two to four appearing December to January. Common in cultivation, but rare and threatened in the wild.



Banks Peninsula Hebe
Hebe strictissima
Rounded fast-growing shrub native to Banks Peninsula. Prolific white flowers sometimes tinted lavender. Fine lance shaped leaves. Evergreen. Relatively hardy.



TSG
TAI TAPU SCULPTURE GARDEN
199 Cossars Road, Christchurch, New Zealand

2020

